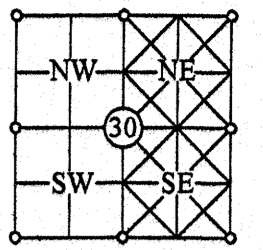


VANTAGE BAY, PLANNED UNIT DEVELOPMENT

A PORTION OF THE EAST HALF OF SECTION 30, TOWNSHIP 17 NORTH, RANGE 23 EAST, W.M., KITITAS COUNTY, WASHINGTON

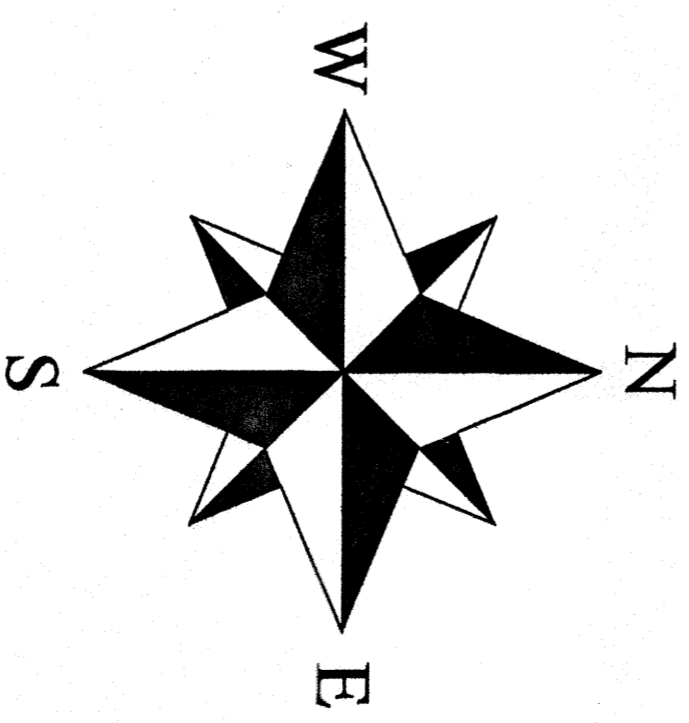
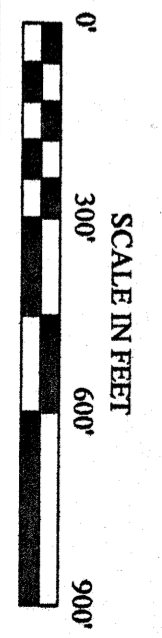
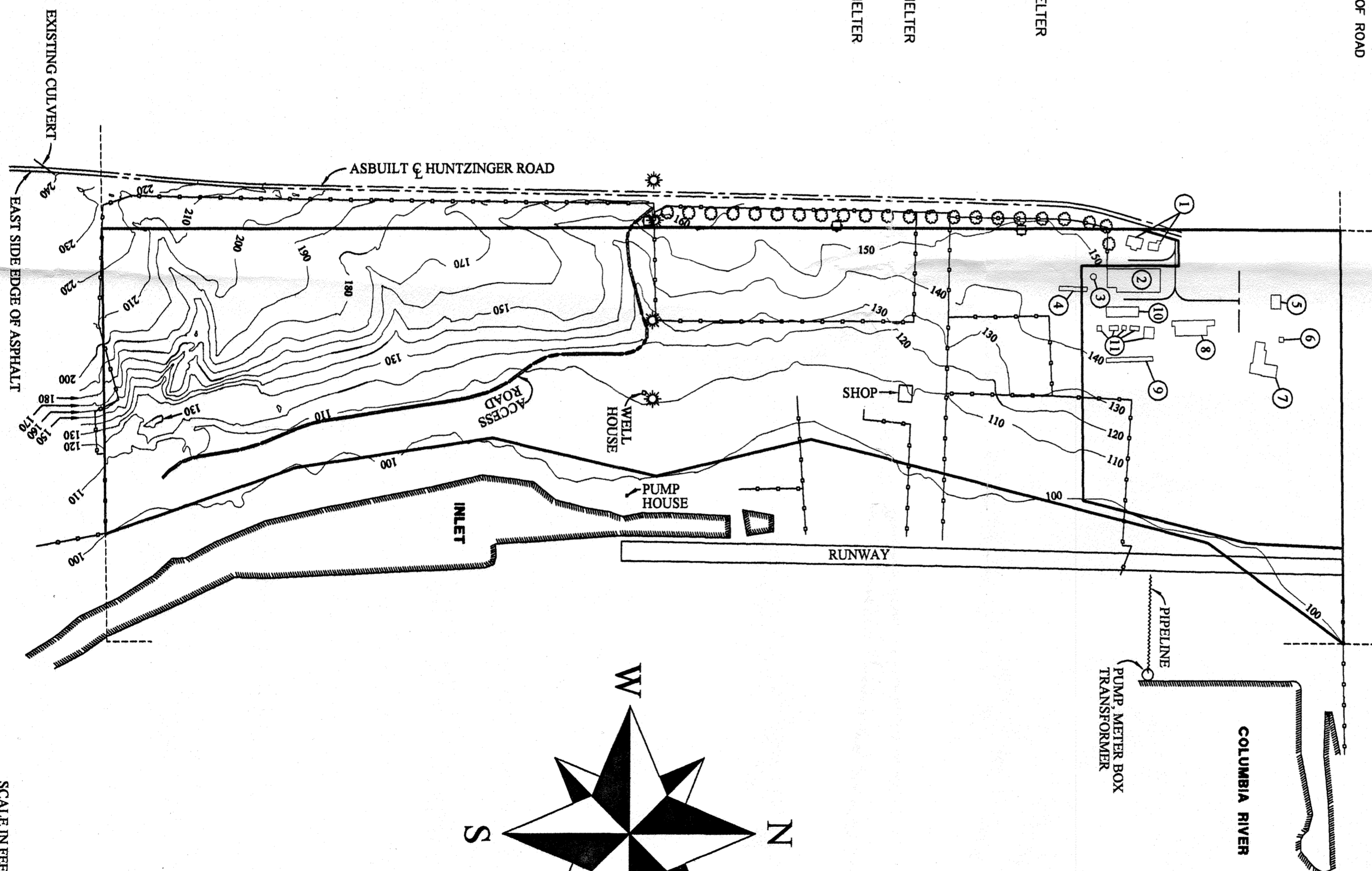
SECTION INDEX:
SEC 30, T17N, R23E, W.M.,
KITITAS COUNTY, WA



EQUIPMENT USED:
TOPCON GTS 303D 5
SECOND TOTAL
STATION OR TOPCON
HIPER SERIES GPS
WITH A MINIMUM
LINEAR CLOSURE OF
1:10,000 IN
CONFORMANCE WITH
REQUIREMENTS OF
WAC 332-130-090.

- LEGEND:**
- BRASS CAP MONUMENT FOUND
 - 5/8" REBAR WITH SURVEYORS CAP MARKED LS 12491 FOUND
 - COMPUTED POINT NOT SET OR FOUND
 - DATA PER SURVEY RECORDED IN BOOK 31 OF SURVEYS, AT PAGE 154
 - FENCE LINE FOUND
 - ASBUILT CENTERLINE OF ROAD
 - EDGE OF ASPHALT
 - ☼ FIRE HYDRANT
 - ⊕ UTILITY POLE
 - ☼ TREES OR TREE LINE

- STRUCTURE INDEX:**
- ① MOBILE HOME
 - ② STABLES & ARENA
 - ③ HORSE ARENA
 - ④ COVERED HORSE SHELTER
 - ⑤ BARN
 - ⑥ PUMP HOUSE
 - ⑦ HOUSE
 - ⑧ HORSE STABLES
 - ⑨ COVERED ANIMAL SHELTER
 - ⑩ HAY BARN
 - ⑪ COVERED ANIMAL SHELTER



Todd Lolkus

Land Surveying, LLC.

Hassle free land development from start to finish.
1322 Basin St. SW, Suite "A", Ephrata, WA 98823
(509) 754-0135 www.todd-surveying.com Fax: (509) 754-0137

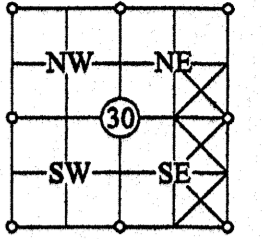
PROJECT NAME: **VANTAGE BAY
PLANNED UNIT DEVELOPMENT**

DRAWN BY:	PROJECT #:	DATE:	SCALE:	SHEET:
LENNARD LOPEZ	06-104-PL	06-01-06	1" = 300'	SITE PLAN

VANTAGE BAY, PLANNED UNIT DEVELOPMENT

A PORTION OF THE EAST HALF OF SECTION 30, TOWNSHIP 17 NORTH, RANGE 23 EAST, W.M., KITITAS COUNTY, WASHINGTON

SECTION INDEX:
SEC 30, T17N, R23E, W.M.,
KITITAS COUNTY, WA



EQUIPMENT USED:
TOPCON GTS 303D 5
SECOND TOTAL
STATION OR TOPCON
HIPER SERIES GPS
WITH A MINIMUM
LINEAR CLOSURE OF
1:10,000 IN
CONFORMANCE WITH
REQUIREMENT 7 OF
WAC 332-130-090.

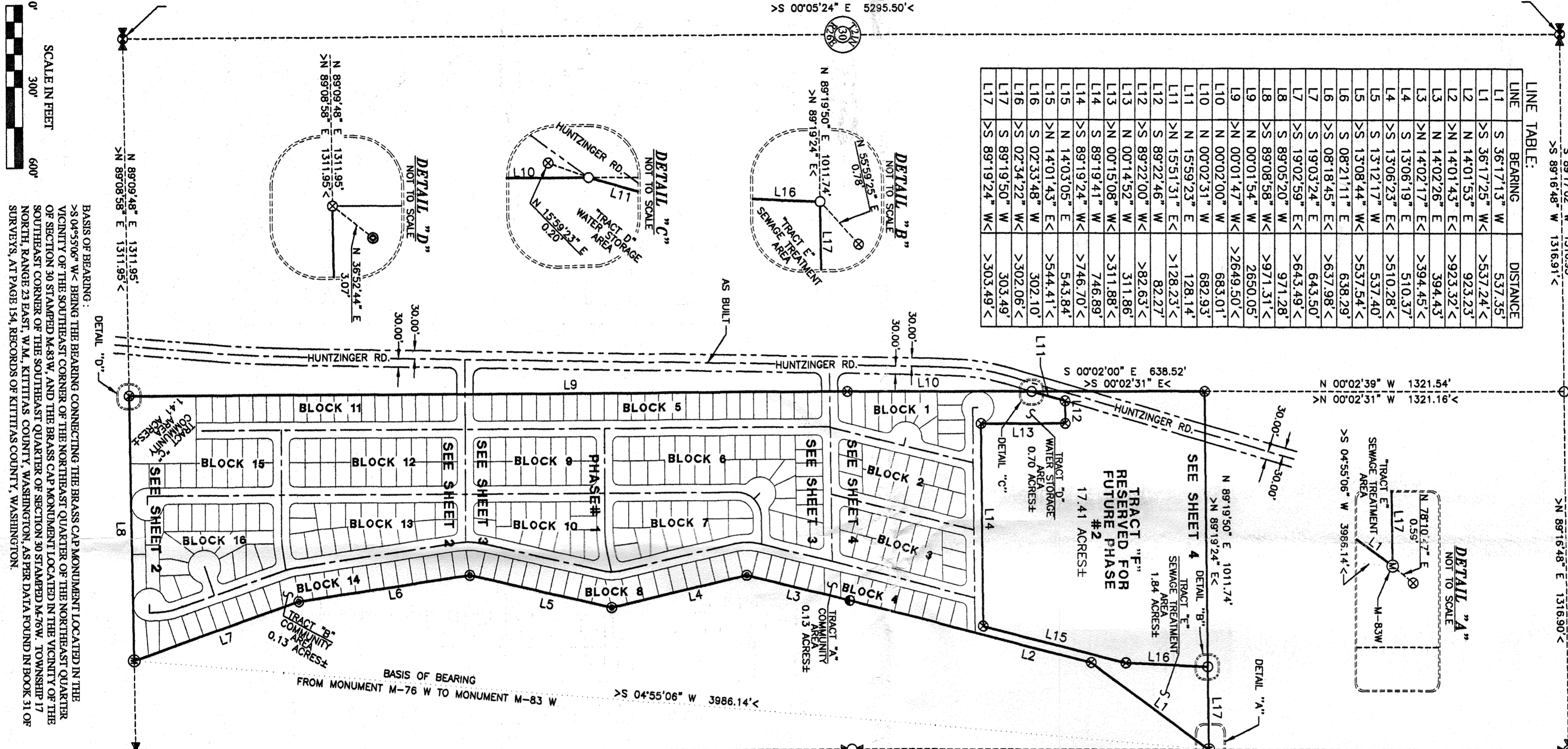
SURVEYORS CERTIFICATE:
CHRISTOPHER T. LOKKUS, REGISTERED AS A LAND SURVEYOR BY THE STATE OF WASHINGTON, CERTIFY THAT THIS PLAN IS BASED ON AN ACTUAL SURVEY OF THE LAND DESCRIBED HEREIN, CONDUCTED BY ME OR UNDER MY SUPERVISION, DURING THE PERIOD OF 01-06-2006 THROUGH 01-20-2006, THAT THE DISTANCES, BEARINGS AND ANGLES ARE SHOWN THEREON CORRECTLY, AND THAT THE MONUMENTS OTHER THAN THOSE MONUMENTS APPROVED FOR SETTING AT A LATER DATE, HAVE BEEN SET AND LOT CORNERS STAKED ON THE GROUND AS DEPICTED ON THE PLAN.

AUDITOR'S CERTIFICATE:
FILED FOR RECORD AT THE REQUEST OF CHRISTOPHER T. LOKKUS, THIS DAY OF 20 AT M. IN BOOK OF PLATS, AT PAGE (S) UNDER AUDITOR'S FILE NUMBER COUNTY AUDITOR DEPUTY COUNTY AUDITOR

CHRISTOPHER T. LOKKUS
WASHINGTON STATE PROFESSIONAL LAND SURVEYOR LICENSE NUMBER 41292
DATE

LINE TABLE:

LINE	BEARING	DISTANCE
L1	S 36°17'13" W	537.35'
L1	>S 36°17'25" W <	>537.24' <
L2	N 14°01'53" E	923.23'
L2	>N 14°01'43" E <	>923.32' <
L3	N 14°02'26" E	394.43'
L3	>N 14°02'17" E <	>394.45' <
L4	S 13°06'19" E	510.37'
L4	>S 13°06'23" E <	>510.28' <
L5	S 13°12'17" W	537.40'
L5	>S 13°08'44" W <	>537.54' <
L6	S 08°21'11" E	638.29'
L6	>S 08°18'45" E <	>637.98' <
L7	S 19°03'24" E	643.50'
L7	>S 19°02'59" E <	>643.49' <
L8	S 89°05'20" W	971.28'
L8	>S 89°08'58" W <	>971.31' <
L9	N 00°01'54" W	2650.05'
L9	>N 00°01'47" W <	>2649.50' <
L10	N 00°02'00" W	683.01'
L10	>N 00°02'31" W <	>682.93' <
L11	N 15°59'23" E	128.14'
L11	>N 15°51'31" E <	>128.23' <
L12	S 89°22'46" W	82.27'
L12	>S 89°22'00" W <	>82.63' <
L13	N 00°14'52" W	311.86'
L13	>N 00°15'08" W <	>311.88' <
L14	S 89°19'41" W	746.89'
L14	>S 89°19'24" W <	>746.70' <
L15	N 14°03'05" E	543.84'
L15	>N 14°01'43" E <	>544.41' <
L16	S 02°33'48" W	302.10'
L16	>S 02°34'22" W <	>302.06' <
L17	S 89°19'50" W	303.49'
L17	>S 89°19'24" W <	>303.49' <



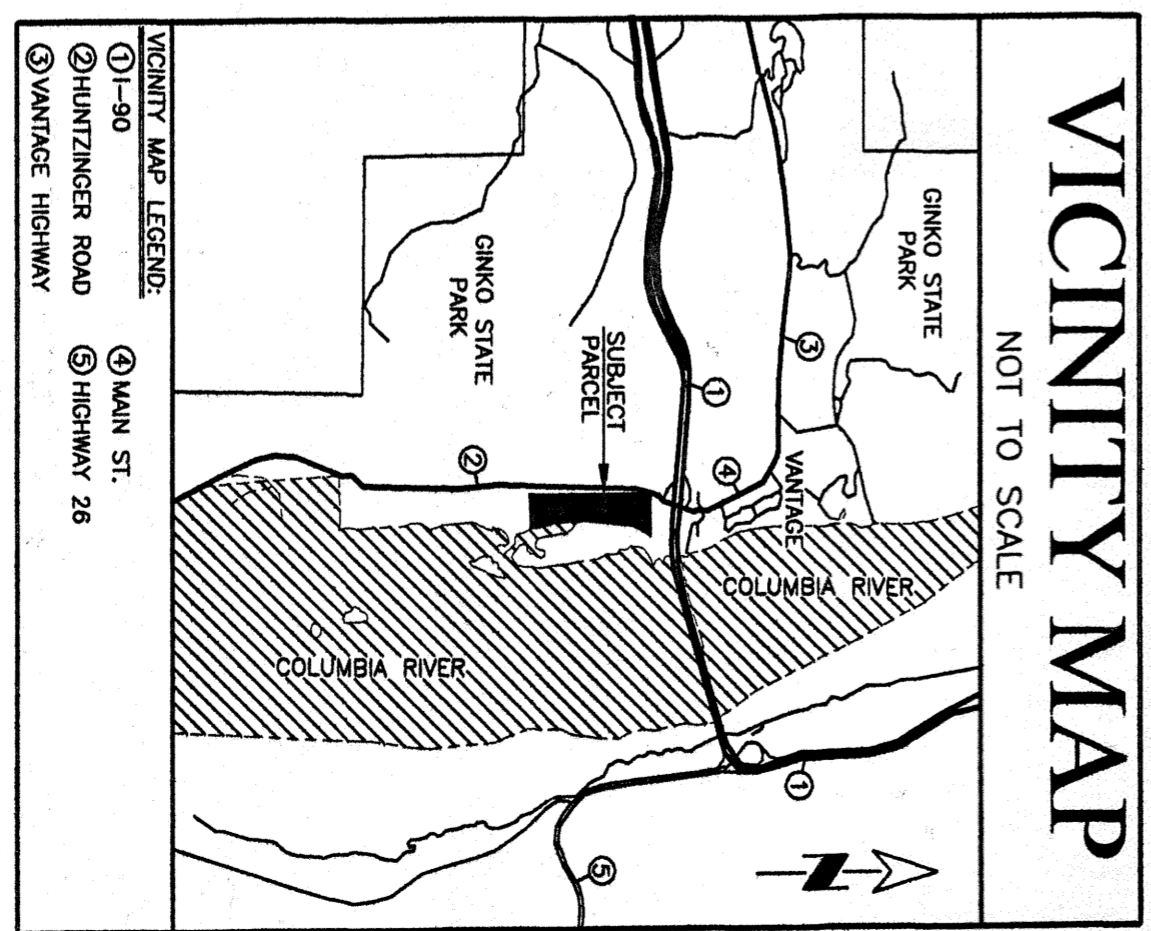
SCALE IN FEET
300'
600'

BASIS OF BEARING:
>S 04°55'06" W < BEING THE BEARING CONNECTING THE BRASS CAP MONUMENT LOCATED IN THE VICINITY OF THE SOUTHEAST CORNER OF THE NORTHEAST QUARTER OF THE NORTHEAST QUARTER OF SECTION 30 STAMPED M-63 W, AND THE BRASS CAP MONUMENT LOCATED IN THE VICINITY OF THE SOUTHEAST CORNER OF THE SOUTHEAST QUARTER OF SECTION 30 STAMPED M-76 W, TOWNSHIP 17 NORTH, RANGE 23 EAST, W.M., KITITAS COUNTY, WASHINGTON, AS PER DATA FOUND IN BOOK 31 OF SURVEYS, AT PAGE 154, RECORDS OF KITITAS COUNTY, WASHINGTON.

NOTE:
EACH LOT SHALL NOT
CONTAIN MORE THAN
ONE DWELLING UNIT.

- LEGEND:
- STATE OF WASHINGTON DEPARTMENT OF NATURAL RESOURCES BRASS CAP MONUMENT FOUND IN CASE FOUND
 - COMPUTED POINT NOT SET OR FOUND
 - ⊙ 5/8 REBAR FOUND WITH NO CAP
 - ⊙ 5/8 REBAR WITH SURVEYORS CAP MARKED "LS 10819" FOUND
 - ⊙ 5/8 REBAR WITH SURVEYORS CAP MARKED "LS 12491" FOUND
 - ⊙ ALUMINUM CAP MONUMENT FOUND
 - ⊙ CONCRETE MONUMENT FOUND
 - >> DATA PER SURVEY RECORDED IN BOOK 31 OF SURVEYS, AT PAGE 154

- LEGEND:
- ROAD CENTERLINE
 - - - ROAD RIGHT-OF-WAY BOUNDARY
 - SECTION LINE
 - ___ PROPERTY LINE



TOTAL:
GROSS ACREAGE: 75.61 ACRES
DWELLING UNIT INFO: 4.17 DWELLING UNITS PER 1 ACRE
TOTAL NUMBER OF LOTS: 316
TOTAL NUMBER OF DWELLING UNIT LOTS: 311
DWELLING UNIT LOT DENSITY: 72% OF TOTAL AREA

Todd Lolkus
Land Surveying, LLC.

Hassle free land development from start to finish.
1322 Basin St. SW, Suite "A", Ephrata, WA 98823
(509) 754-0135 www.todd-surveying.com Fax: (509) 754-0137

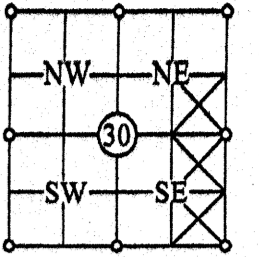
PROJECT NAME: **VANTAGE BAY PLANNED UNIT DEVELOPMENT**

DRAWN BY:	PROJECT #:	DATE:	SCALE:	SHEET:
LENNARD L. / ROGER C.	06-104-PL	06-01-06	1"=300'	1 OF 6

VANTAGE BAY, PLANNED UNIT DEVELOPEMENT

A PORTION OF THE EAST HALF OF SECTION 30, TOWNSHIP 17 NORTH, RANGE 23 EAST, W.M., KITTITAS COUNTY, WASHINGTON

SECTION INDEX:
SEC 30, T17N, R23E, W.M.,
KITTITAS COUNTY, WA



EQUIPMENT USED:
TOPCON GTS 303D 5
SECOND TOTAL
STATION OR TOPCON
HIPER SERIES GPS
WITH A MINIMUM
LINEAR CLOSURE OF
1:10,000 IN
CONFORMANCE WITH
REQUIREMENTS OF
WAC 332-130-090.

CURVE TABLE:

CURVE	DELTA ANGLE	RADIUS	ARC LENGTH
C1	90°00'00"	20.00'	31.42'
C2	90°52'46"	60.00'	95.17'
C3	80°24'21"	60.00'	84.20'
C4	84°14'14"	60.00'	88.21'
C5	12°48'23"	20.00'	4.47'
C6	62°42'58"	20.00'	21.89'
C7	81°40'43"	20.00'	28.51'
C8	08°19'17"	200.00'	29.05'
C9	05°29'13"	260.00'	24.90'
C10	02°50'03"	260.00'	12.86'
C11	79°17'47"	20.00'	27.68'
C12	141°19'04"	20.00'	49.33'
C13	59°53'30"	60.00'	62.72'
C14	23°48'38"	60.00'	24.93'
C15	44°42'46"	60.00'	46.82'
C16	34°13'20"	60.00'	35.84'
C17	36°17'10"	60.00'	38.00'
C18	43°23'45"	60.00'	45.44'
C19	40°18'59"	60.00'	42.22'
C20	141°19'04"	20.00'	49.33'
C21	05°02'19"	240.00'	21.11'
C22	84°20'41"	20.00'	29.44'
C23	29°25'39"	60.00'	30.82'
C24	51°24'16"	60.00'	53.83'
C25	75°23'08"	60.00'	78.94'
C26	14°36'52"	60.00'	15.30'
C27	01°43'51"	300.00'	9.06'
C28	05°56'52"	300.00'	31.14'
C29	10°05'06"	300.00'	52.80'
C30	00°22'55"	300.00'	2.00'
C31	08°20'00"	169.20'	24.61'
C32	02°22'13"	169.20'	7.00'
C33	05°45'49"	200.00'	20.12'
C34	21°33'27"	230.00'	86.54'
C35	18°08'44"	270.00'	85.51'
C36	5000.02'	366.47'	366.38'

LINE TABLE:

LINE	BEARING	DISTANCE
L1	N 89°58'06" E	80.00'
L2	N 00°01'54" W	53.00'
L3	N 00°01'54" W	33.00'
L4	S 89°58'06" W	100.00'
L5	N 00°01'54" W	50.00'
L6	N 00°01'54" W	60.00'
L7	S 89°58'06" W	70.00'
L8	S 00°01'54" E	37.00'
L9	N 00°01'54" W	57.00'
L10	S 89°58'06" W	90.00'
L11	S 00°01'54" E	56.00'
L12	N 00°01'54" W	38.00'
L13	S 00°01'54" E	58.00'
L14	S 00°01'54" E	59.00'
L15	N 00°01'54" W	68.99'
L16	S 00°01'54" E	6.68'
L17	N 89°58'06" E	43.00'
L18	N 89°58'06" E	39.17'
L19	S 00°01'54" E	62.00'
L20	N 00°01'54" W	82.00'
L21	S 08°21'11" E	65.58'
L22	S 89°58'06" W	63.00'
L23	N 89°58'06" E	68.45'
L24	S 00°01'54" E	76.00'
L25	S 04°30'32" E	76.23'
L26	S 08°21'11" E	66.16'
L27	S 89°58'06" W	88.95'
L28	N 81°38'49" E	72.84'
L29	S 00°01'54" E	70.00'
L30	S 04°30'32" E	67.15'
L31	S 08°21'11" E	67.00'
L32	S 89°58'06" W	74.43'
L33	S 04°30'32" E	3.06'
L34	N 81°38'49" E	77.34'
L35	S 00°01'54" E	65.75'
L36	S 04°30'32" E	60.58'
L37	S 08°21'11" E	63.50'
L38	S 89°58'06" W	79.58'
L39	N 04°30'32" W	5.37'
L40	S 81°38'49" W	81.61'
L41	N 00°01'54" W	61.25'
L42	N 04°30'32" W	54.76'
L43	S 08°21'11" E	60.00'
L44	S 89°58'06" W	84.38'
L45	N 04°30'32" W	6.67'
L46	N 81°38'49" E	85.64'
L47	N 00°01'54" W	57.75'
L48	S 04°30'32" E	50.96'
L49	S 08°21'11" E	57.50'
L50	N 89°58'06" E	88.90'
L51	N 04°30'32" W	6.97'
L52	N 81°38'49" E	89.50'
L53	N 00°01'54" W	55.00'
L54	S 04°30'32" E	48.15'
L55	N 08°21'11" W	55.00'
L56	N 89°58'06" E	93.20'
L57	N 04°30'32" W	7.01'
L58	N 81°38'49" E	93.20'
L59	N 00°01'54" W	60.12'
L60	S 04°30'32" E	46.10'
L61	N 08°21'11" W	53.00'
L62	N 81°38'49" E	54.57'
L63	S 81°38'49" W	43.26'
L64	N 81°38'49" E	96.76'
L65	S 00°01'54" E	71.13'
L66	S 00°01'54" E	99.03'
L67	S 09°17'51" E	52.72'
L68	S 81°38'18" W	95.89'
L69	N 08°21'11" W	52.70'
L70	S 09°17'51" E	53.96'
L71	N 08°21'11" W	37.68'
L72	N 89°58'06" E	34.00'
L73	N 89°58'06" E	59.98'
L74	N 89°58'06" E	11.16'
L75	S 81°38'49" W	35.01'

LINE	BEARING	DISTANCE
L76	N 89°58'06" E	25.14'
L77	N 81°38'49" E	47.05'
L78	S 00°01'54" E	31.00'
L79	S 00°01'54" E	51.00'
L80	S 00°01'54" E	71.71'
L81	S 19°03'24" E	36.70'
L82	N 70°56'36" E	98.46'
L83	S 00°01'54" E	30.48'
L84	S 19°03'24" E	66.19'
L85	N 89°58'06" E	50.00'
L86	N 89°58'06" E	114.66'
L87	N 27°37'50" W	57.03'
L88	S 19°03'24" E	42.37'
L89	N 84°06'05" E	102.59'
L90	S 51°26'27" E	107.14'
L91	S 00°01'54" E	18.26'
L92	N 83°50'46" E	71.39'
L93	S 00°01'54" E	31.74'
L94	N 00°01'54" W	36.23'
L95	S 00°01'54" E	54.00'
L96	S 37°24'18" W	139.68'
L97	S 13°20'18" W	65.04'
L98	S 00°54'40" E	61.35'
L99	S 19°03'24" E	67.20'
L100	S 00°54'40" E	44.67'
L101	N 70°56'36" E	90.11'
L102	N 00°54'40" W	52.12'
L103	N 19°03'24" W	20.80'
L104	S 89°58'06" W	89.17'
L105	N 70°56'36" W	52.28'
L106	S 89°05'20" W	53.11'
L107	N 89°05'20" E	60.00'
L108	N 89°05'20" E	59.25'
L109	S 00°01'54" E	50.01'
L110	N 89°05'20" E	90.01'
L111	N 89°05'20" W	34.34'
L112	N 89°05'20" E	124.35'
L113	N 00°54'40" W	50.00'
L114	N 81°38'49" E	93.49'
L115	N 08°21'11" W	33.92'
L116	N 08°21'11" W	54.00'
L117	S 81°38'49" W	94.50'
L118	S 08°21'11" E	47.29'
L119	S 08°21'11" E	54.29'
L120	S 81°38'49" W	94.36'
L121	N 19°03'24" W	36.20'
L122	N 19°03'24" W	61.06'
L123	S 81°38'49" W	96.17'
L124	N 19°03'24" W	64.36'
L125	N 19°03'24" W	46.50'
L126	S 70°56'36" W	94.50'
L127	N 19°03'24" W	53.00'
L128	N 19°03'24" W	51.30'
L129	N 19°03'24" W	53.30'
L130	S 70°56'36" W	94.51'
L131	S 19°03'24" E	52.50'
L132	N 70°56'36" E	99.49'
L133	S 19°03'24" E	67.08'
L134	N 89°58'06" E	112.89'
L135	S 00°54'40" E	25.86'
L136	S 19°03'24" E	42.31'
L137	S 85°27'18" W	128.12'
L138	S 19°03'24" E	55.75'
L139	N 00°54'40" E	25.86'

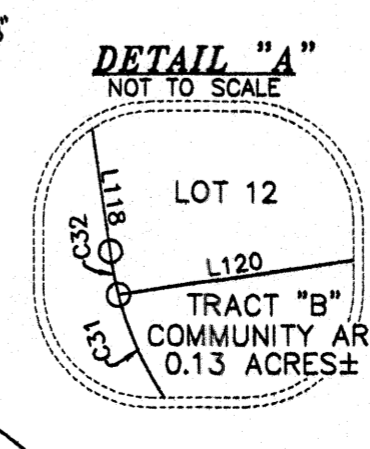
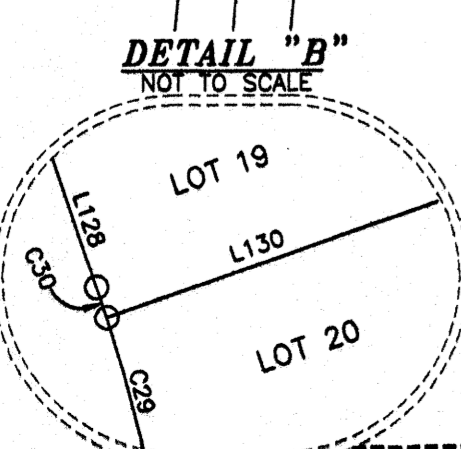
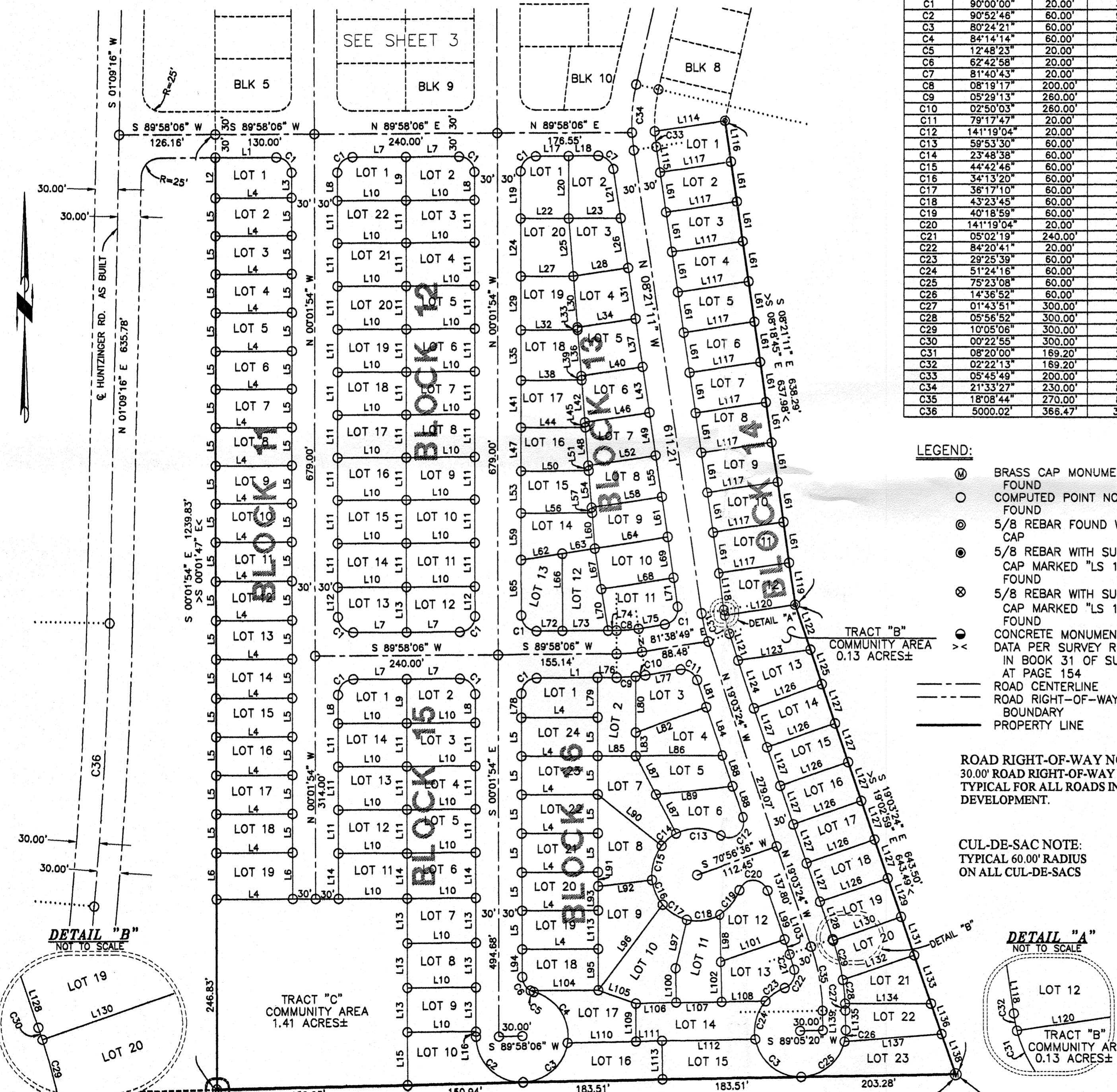
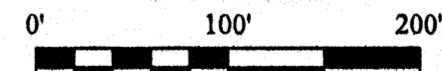
LEGEND:

- ⊙ BRASS CAP MONUMENT FOUND
- COMPUTED POINT NOT SET OR FOUND
- ⊙ 5/8 REBAR FOUND WITH NO CAP
- ⊙ 5/8 REBAR WITH SURVEYORS CAP MARKED "LS 10819" FOUND
- ⊙ 5/8 REBAR WITH SURVEYORS CAP MARKED "LS 12491" FOUND
- ⊙ CONCRETE MONUMENT FOUND DATA PER SURVEY RECORDED IN BOOK 31 OF SURVEYS, AT PAGE 154
- ROAD CENTERLINE
- ROAD RIGHT-OF-WAY
- BOUNDARY
- PROPERTY LINE

ROAD RIGHT-OF-WAY NOTE:
30.00' ROAD RIGHT-OF-WAY IS
TYPICAL FOR ALL ROADS IN THIS
DEVELOPMENT.

CUL-DE-SAC NOTE:
TYPICAL 60.00' RADIUS
ON ALL CUL-DE-SACS

SCALE IN FEET



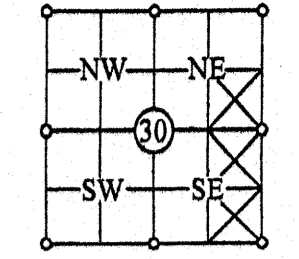
Todd Lolkus
Land Surveying, LLC.
Hassle free land development from start to finish.
1322 Basin St. SW, Suite "A", Ephrata, WA 98823
(509) 754-0135 www.todd-surveying.com Fax: (509) 754-0137

PROJECT NAME:		VANTAGE BAY PLANNED UNIT DEVELOPMENT		
DRAWN BY:	PROJECT #:	DATE:	SCALE:	SHEET:
LENNARD L. / ROGER C.	06-104-PL	06-01-06	1"=100'	2 OF 6

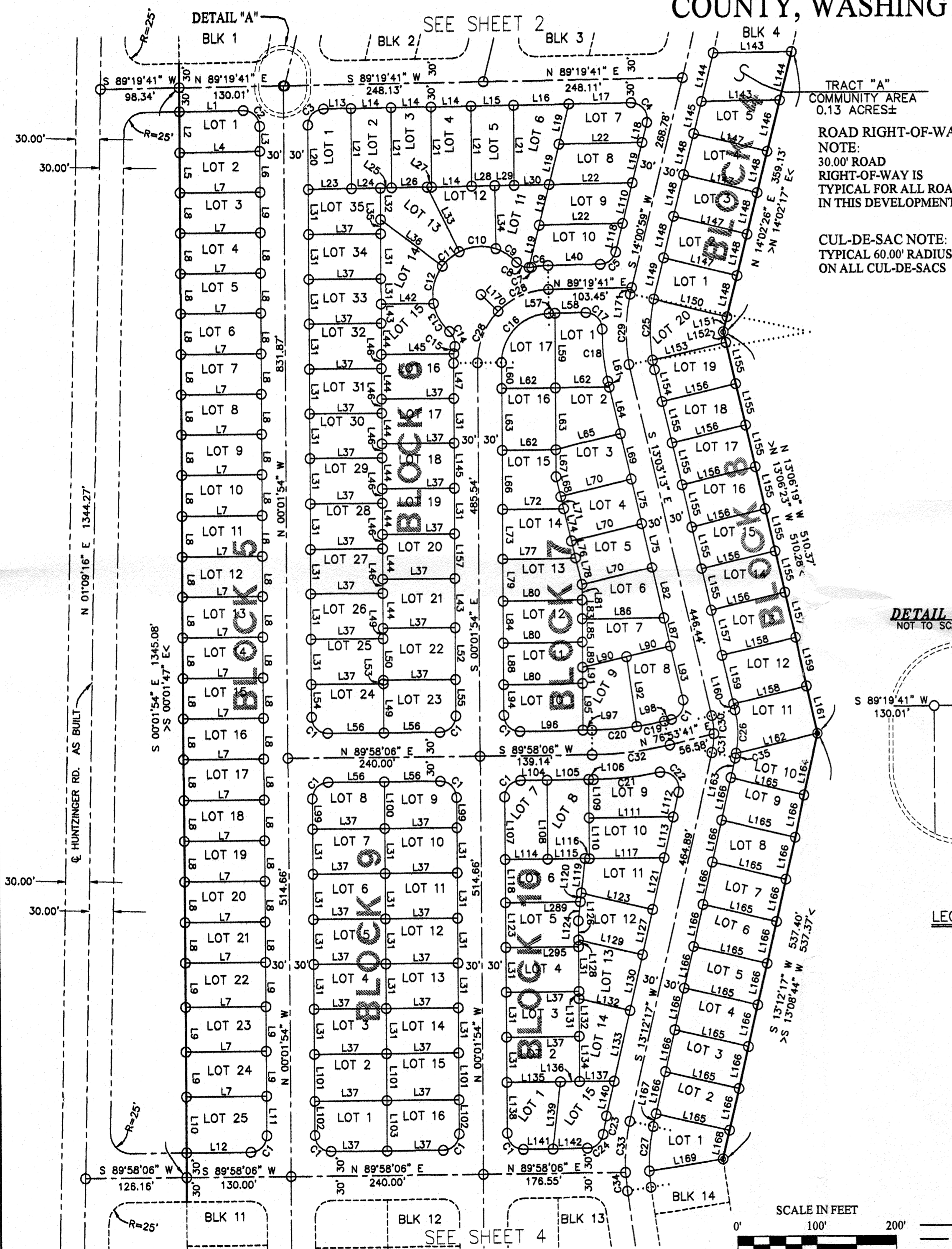
VANTAGE BAY, PLANNED UNIT DEVELOPEMENT

A PORTION OF THE EAST HALF OF SECTION 30, TOWNSHIP 17 NORTH, RANGE 23 EAST, W.M., KITTITAS COUNTY, WASHINGTON

SECTION INDEX:
SEC 30, T17N, R23E, W.M.,
KITTITAS COUNTY, WA



EQUIPMENT USED:
TOPCON GTS 303D 5
SECOND TOTAL
STATION OR TOPCON
HIPER SERIES GPS
WITH A MINIMUM
LINEAR CLOSURE OF
1:10,000 IN
CONFORMANCE WITH
REQUIREMENTS OF
WAC 332-130-090.



CURVE TABLE:

CURVE	DELTA ANGLE	RADIUS	ARC LENGTH
C1	90°00'00"	20.00'	31.42'
C2	90°38'25"	20.00'	31.64'
C3	89°21'35"	20.00'	31.19'
C4	104°42'45"	20.00'	36.55'
C5	75°17'15"	20.00'	26.28'
C6	09°54'28"	120.00'	20.75'
C7	08°55'08"	20.00'	3.11'
C8	49°53'33"	20.00'	17.42'
C9	29°45'07"	60.00'	31.16'
C10	44°49'15"	60.00'	46.94'
C11	26°34'54"	60.00'	27.84'
C12	47°18'07"	60.00'	49.53'
C13	38°42'36"	60.00'	40.54'
C14	58°48'41"	20.00'	20.53'
C15	04°17'04"	120.00'	8.97'
C16	89°21'35"	60.00'	93.58'
C17	91°56'52"	20.00'	32.10'
C18	14°22'51"	260.00'	65.26'
C19	05°01'32"	400.00'	35.08'
C20	08°02'53"	400.00'	56.19'
C21	10°36'05"	460.00'	85.11'
C22	11°35'16"	20.00'	39.74'
C23	05°06'17"	280.00'	23.16'
C24	81°52'07"	20.00'	28.58'
C25	21°50'32"	200.00'	76.24'
C26	23°48'15"	130.00'	54.01'
C27	15°47'38"	200.00'	55.13'
C28	44°40'47"	90.00'	70.18'
C29	21°50'32"	230.00'	87.68'
C30	12°57'27"	100.00'	22.61'
C31	13°18'02"	100.00'	23.21'
C32	13°04'25"	430.00'	98.12'
C33	15°49'36"	230.00'	63.53'
C34	05°43'51"	230.00'	23.01'
C35	02°30'20"	130.00'	5.69'
C36	02°29'08"	130.00'	5.64'

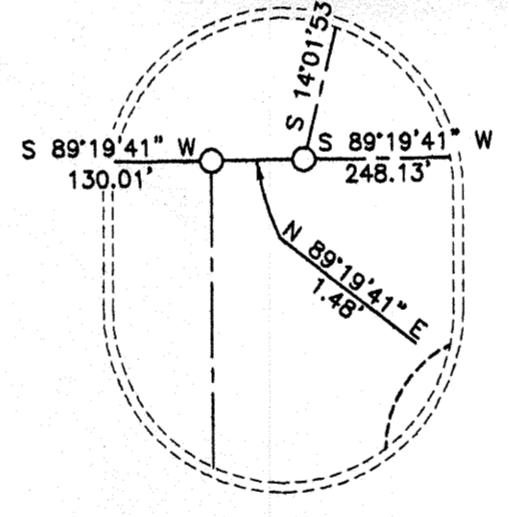
LINE TABLE:

LINE	BEARING	DISTANCE
L31	S 00°01'54" E	55.60'
L32	S 00°01'54" E	38.97'
L33	S 26°20'28" E	89.42'
L34	S 00°40'19" E	78.00'
L35	N 00°01'54" W	17.64'
L36	N 52°55'23" W	96.33'
L37	N 89°58'06" E	90.00'
L38	N 14°02'26" E	53.85'
L39	S 14°02'26" W	36.27'
L40	S 89°19'41" W	64.77'
L41	S 00°01'54" E	31.70'
L42	S 89°58'06" W	65.62'
L43	S 00°01'54" E	23.90'
L44	S 00°01'54" E	38.10'
L45	S 89°58'06" W	90.58'
L46	S 00°01'54" E	17.50'
L47	S 00°01'54" E	43.84'
L48	N 00°01'54" W	43.10'
L49	N 00°01'54" W	60.80'
L50	S 00°01'54" E	12.50'
L51	S 00°01'54" E	51.10'
L52	N 00°01'54" W	63.60'
L53	N 00°01'54" W	4.50'
L54	S 00°01'54" E	40.60'
L55	N 00°01'54" W	45.10'
L56	S 89°58'06" W	70.00'
L57	N 89°19'41" E	7.48'
L58	N 89°19'41" E	38.18'
L59	S 00°01'54" E	92.26'
L60	S 00°01'54" W	32.18'
L61	N 13°06'19" W	7.69'
L62	S 89°58'06" W	66.81'
L63	S 00°01'54" E	77.02'
L64	N 13°06'19" W	59.91'
L65	S 76°53'41" W	82.50'
L66	S 89°58'06" W	66.81'
L67	S 00°01'54" E	72.50'
L68	N 00°01'54" W	33.15'
L69	N 13°06'19" W	25.20'
L70	N 13°06'19" W	57.50'
L71	S 76°53'41" W	90.00'
L72	S 13°06'19" E	15.19'
L73	S 89°58'06" W	75.95'
L74	S 00°01'54" E	61.00'
L75	S 13°06'19" E	40.81'
L76	N 13°06'19" W	56.00'
L77	N 13°06'19" W	21.81'
L78	S 89°58'06" E	90.11'
L79	S 13°06'19" E	34.19'
L80	N 00°01'54" W	52.50'
L81	N 89°58'06" E	97.85'
L82	S 00°01'54" E	19.20'
L83	N 13°06'19" W	64.01'
L84	S 00°01'54" E	22.79'
L85	S 00°01'54" E	51.20'
L86	N 00°01'54" W	28.41'
L87	N 89°58'06" E	102.15'
L88	N 13°06'19" E	34.98'
L89	S 00°01'54" E	51.20'
L90	S 00°01'54" E	31.22'
L91	S 76°53'41" W	56.49'
L92	N 00°01'54" W	19.98'
L93	S 08°04'47" E	87.62'
L94	S 13°06'19" E	68.82'
L95	N 00°01'54" E	37.94'
L96	S 89°58'06" W	57.94'
L97	S 89°58'06" W	77.85'
L98	N 89°58'06" E	11.29'
L99	S 00°01'54" E	9.13'
L100	N 00°01'54" E	37.00'
L101	N 00°01'54" W	57.00'
L102	S 00°01'54" E	42.06'
L103	S 00°01'54" E	62.06'
L104	N 89°58'06" E	33.00'
L105	N 89°58'06" E	51.60'
L106	S 89°58'06" W	4.54'
L107	S 00°01'54" E	77.00'
L108	S 00°01'54" E	97.00'

LINE TABLE:

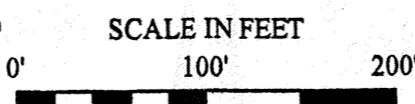
LINE	BEARING	DISTANCE
L1	S 89°19'41" W	79.78'
L2	S 00°01'54" E	51.50'
L3	S 00°01'54" E	31.28'
L4	S 89°19'41" W	100.01'
L5	S 00°01'54" E	49.70'
L6	S 00°01'54" E	50.82'
L7	S 89°58'06" W	100.00'
L8	N 00°01'54" W	50.00'
L9	S 00°01'54" E	55.00'
L10	S 00°01'54" E	68.87'
L11	S 00°01'54" E	48.87'
L12	S 89°58'06" W	80.00'
L13	S 89°19'41" W	34.23'
L14	S 89°19'41" W	50.00'
L15	S 89°19'41" W	53.00'
L16	N 89°19'41" E	68.75'
L17	S 89°19'41" W	77.46'
L18	N 14°02'26" E	25.77'
L19	N 14°02'26" E	51.69'
L20	N 00°01'54" W	80.23'
L21	N 00°01'54" W	100.01'
L22	S 89°19'41" W	103.39'
L23	S 89°19'41" W	54.00'
L24	S 89°19'41" W	36.00'
L25	S 89°19'41" W	14.00'
L26	N 89°19'41" E	44.45'
L27	N 89°19'41" E	5.55'
L28	S 89°19'41" W	28.85'
L29	S 89°19'41" W	24.15'
L30	N 89°19'41" E	43.61'

DETAIL "A"
NOT TO SCALE



LEGEND:

- ⊙ BRASS CAP MONUMENT FOUND
- COMPUTED POINT NOT SET OR FOUND
- ⊙ 5/8 REBAR FOUND WITH NO CAP
- ⊙ 5/8 REBAR WITH SURVEYORS CAP MARKED "LS 10819" FOUND
- ⊙ 5/8 REBAR WITH SURVEYORS CAP MARKED "LS 12491" FOUND
- CONCRETE MONUMENT FOUND
- < DATA PER SURVEY RECORDED IN BOOK 31 OF SURVEYS, AT PAGE 154



- ROAD CENTERLINE
- ROAD RIGHT-OF-WAY BOUNDARY
- PROPERTY LINE

LINE TABLE:

LINE	BEARING	DISTANCE
L109	N 00°01'54" W	48.50'
L110	S 00°01'54" E	50.50'
L111	N 89°58'06" E	105.23'
L112	S 13°12'17" W	30.94'
L113	S 13°12'17" W	51.88'
L114	S 89°58'06" W	53.00'
L115	N 89°58'06" E	48.00'
L116	N 89°58'06" E	5.60'
L117	N 89°58'06" E	93.36'
L118	S 00°01'54" W	53.00'
L119	N 06°40'47" E	42.62'
L120	S 06°40'47" W	10.75'
L121	S 13°12'17" W	65.00'
L122	S 89°58'06" W	92.76'
L123	S 76°47'43" E	91.48'
L124	N 00°01'54" W	55.25'
L125	N 06°40'47" E	23.64'
L126	S 00°01'54" E	23.56'
L127	N 13°12'17" E	57.10'
L128	N 00°01'54" W	8.21'
L129	S 76°47'43" E	82.18'
L130	S 13°12'17" W	71.09'
L131	S 00°01'54" E	9.23'
L132	N 00°01'54" W	46.37'
L133	S 13°12'17" W	89.37'
L134	S 00°01'54" E	55.61'
L135	S 89°58'06" W	66.63'
L136	S 89°58'06" W	23.37'
L137	N 89°58'06" E	43.26'
L138	S 00°01'54" E	62.60'
L139	S 06°40'37" W	83.17'
L140	N 13°12'17" E	43.84'
L141	S 89°58'06" W	36.91'
L142	N 89°58'06" E	42.21'
L143	N 89°19'41" E	97.70'
L144	S 14°02'26" W	62.03'
L145	S 14°02'26" W	41.19'
L146	S 14°02'26" W	66.00'
L147	N 75°57'34" W	94.50'
L148	N 14°02'26" E	53.00'
L149	S 14°02'26" W	46.83'
L150	N 75°57'34" W	94.40'
L151	S 14°02'26" W	19.10'
L152	S 13°06'19" E	13.34'
L153	S 76°53'41" W	94.13'
L154	S 13°06'19" E	40.87'
L155	S 13°06'19" E	53.00'
L156	S 76°53'41" W	94.50'
L157	N 13°06'19" W	57.00'
L158	S 76°53'41" W	94.50'
L159	S 13°06'19" E	62.04'
L160	S 76°53'41" W	94.50'
L161	N 13°06'19" W	7.53'
L162	S 13°06'19" E	60.00'
L163	S 76°53'41" W	105.56'
L164	S 13°12'17" W	24.53'
L165	N 13°12'17" E	77.00'
L166	N 76°47'43" W	94.50'
L167	S 13°12'17" W	16.32'
L168	S 13°12'17" W	36.40'
L169	N 81°38'49" E	93.49'
L170	S 45°21'07" E	30.00'
L171	S 14°00'59" W	8.50'

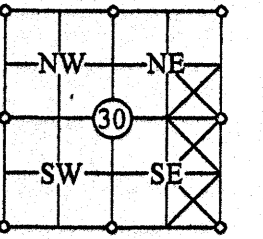
Todd - Lolkus
Land Surveying, LLC.
Hassle free land development from start to finish.
1322 Basin St. SW, Suite "A", Ephrata, WA 98823
(509) 754-0135 www.todd-surveying.com Fax: (509) 754-0137

PROJECT NAME: VANTAGE BAY PLANNED UNIT DEVELOPEMENT				
DRAWN BY: LENNARD L. / ROGER C.	PROJECT #: 06-104-PL	DATE: 06-01-06	SCALE: 1"=100'	SHEET: 3 OF 6

VANTAGE BAY, PLANNED UNIT DEVELOPEMENT

A PORTION OF THE EAST HALF OF SECTION 30, TOWNSHIP 17 NORTH, RANGE 23 EAST, W.M., KITTITAS COUNTY, WASHINGTON

SECTION INDEX:
SEC 30, T17N, R23E, W.M.,
KITTITAS COUNTY, WA



EQUIPMENT USED:
TOPCON GTS 303D 5
SECOND TOTAL
STATION OR TOPCON
HIPER SERIES GPS
WITH A MINIMUM
LINEAR CLOSURE OF
1:10,000 IN
CONFORMANCE WITH
REQUIREMENTS OF
WAC 332-130-090.



ROAD RIGHT-OF-WAY NOTE:
30.00' ROAD RIGHT-OF-WAY IS
TYPICAL FOR ALL ROADS IN THIS
DEVELOPMENT.

CUL-DE-SAC NOTE:
TYPICAL 60.00' RADIUS
ON ALL CUL-DE-SACS

LEGEND:

- ⊙ BRASS CAP MONUMENT FOUND
- COMPUTED POINT NOT SET OR FOUND
- ⊙ 5/8 REBAR FOUND WITH NO CAP
- ⊙ 5/8 REBAR WITH SURVEYORS CAP MARKED "LS 10819" FOUND
- ⊙ 5/8 REBAR WITH SURVEYORS CAP MARKED "LS 12491" FOUND
- CONCRETE MONUMENT FOUND
- >> DATA PER SURVEY RECORDED IN BOOK 31 OF SURVEYS, AT PAGE 154

- ROAD CENTERLINE
- ROAD RIGHT-OF-WAY BOUNDARY
- PROPERTY LINE

CURVE TABLE:

CURVE	DELTA ANGLE	RADIUS	ARC LENGTH
C1	75°17'48"	20.00'	26.28'
C2	104°42'12"	20.00'	36.55'
C3	34°23'31"	60.00'	36.02'
C4	56°23'01"	60.00'	59.04'
C5	168°32'48"	60.00'	176.50'
C6	30°45'52"	20.00'	10.74'
C7	40°59'50"	60.00'	42.93'
C8	80°24'21"	60.00'	84.20'
C9	75°31'21"	20.00'	26.36'
C10	29°19'36"	60.00'	30.71'
C11	26°28'02"	60.00'	27.88'
C12	104°42'12"	20.00'	36.55'
C13	04°30'33"	60.00'	4.72'
C14	14°50'06"	860.00'	222.67'

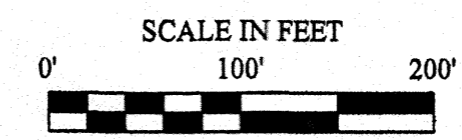
LINE TABLE:

L1	S 89°19'41" W	82.27'
L2	N 75°58'07" W	94.50'
L3	S 14°01'53" W	25.77'
L4	S 14°01'53" W	53.00'
L5	S 14°01'53" W	66.00'
L6	S 14°01'53" W	64.02'
L7	S 89°19'41" W	36.11'
L8	S 14°01'53" W	74.52'
L9	S 14°01'53" W	43.70'
L10	S 14°01'53" W	28.96'
L11	S 14°01'53" W	46.01'
L12	S 89°19'41" W	67.12'
L13	S 14°01'53" W	77.46'
L14	S 89°19'41" W	44.89'
L15	S 89°19'41" W	110.80'
L16	S 00°02'00" E	50.00'
L17	S 00°02'00" E	89.70'
L18	S 89°19'41" W	45.69'
L19	S 00°02'00" E	149.42'
L20	S 89°19'41" W	50.00'
L21	S 00°02'00" E	63.93'
L22	S 00°02'00" E	100.01'
L23	S 89°19'41" W	16.30'
L24	S 14°01'53" W	45.57'
L25	S 89°19'41" W	3.54'
L26	N 34°50'17" W	83.82'
L27	N 61°16'18" W	52.19'
L28	S 89°19'41" W	72.44'
L29	S 00°02'00" E	55.00'
L30	S 89°19'41" W	38.70'
L31	S 14°01'53" W	56.00'
L32	S 14°01'53" W	34.01'
L33	S 89°19'41" W	77.62'
L34	S 75°58'07" E	90.00'
L35	S 14°01'53" W	21.99'
L36	N 89°19'41" E	31.02'
L37	N 89°19'41" E	62.03'
L38	N 14°01'53" E	46.85'
L39	N 14°01'53" E	89.95'
L40	S 14°01'53" W	45.23'
L41	S 14°01'53" W	70.47'
L42	S 89°19'41" W	46.60'
L43	S 00°40'19" E	18.74'
L44	S 75°58'07" E	30.00'
L45	S 00°01'54" E	35.13'
L46	S 89°19'41" W	97.70'
L47	S 89°19'41" W	92.58'
L48	S 14°02'26" W	47.80'
L49	S 14°02'26" W	72.60'
L50	S 14°01'53" W	36.26'
L51	S 89°19'41" W	120.57'
L52	S 89°19'41" W	133.13'
L53	S 14°01'53" W	25.85'
L54	S 89°19'41" W	145.70'
L55	S 14°01'53" W	51.69'
L56	S 89°19'41" W	138.08'
L57	S 15°59'23" W	128.14'
L58	S 14°02'26" W	62.03'

Todd Lolkus
Land Surveying, LLC.
Hassle free land development from start to finish.
1322 Basin St. SW, Suite "A", Ephrata, WA 98823
(509) 754-0135 www.todd-surveying.com Fax: (509) 754-0137

PROJECT NAME: VANTAGE BAY PLANNED UNIT DEVELOPEMENT

DRAWN BY:	PROJECT #:	DATE:	SCALE:	SHEET:
LENNARD L. / ROGER C.	06-104-PL	06-01-06	1"=100'	4 OF 6

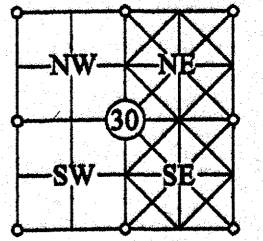


BLK 5 SEE SHEET 3

VANTAGE BAY, PLANNED UNIT DEVELOPEMENT

A PORTION OF THE EAST HALF OF SECTION 30, TOWNSHIP 17 NORTH, RANGE 23 EAST, W.M., KITTITAS COUNTY, WASHINGTON

SECTION INDEX:
SEC 30, T17N, R23E, W.M.,
KITTITAS COUNTY, WA



LOT INFORMATION:

<p>BLOCK 1: LOT 1 = 5668.7± LOT 2 = 6342.5± LOT 3 = 6970.7± LOT 4 = 7450.0± LOT 5 = 5949.6± LOT 6 = 5766.5± LOT 7 = 7911.9± LOT 8 = 5072.5± LOT 9 = 5672.6± LOT 10 = 5000.3± LOT 11 = 5113.3± LOT 12 = 5226.9±</p> <p>BLOCK 2: LOT 1 = 5243.7± LOT 2 = 5279.7± LOT 3 THRU 6 = 5040.0± LOT 7 = 50440.0± LOT 8 = 5011.6± LOT 9 = 5050.5± LOT 10 THRU 14 = 5040.0± LOT 15 = 5133.5± LOT 16 = 5351.0± LOT 17 = 5396.7±</p> <p>BLOCK 3: LOT 1 = 5050.5± LOT 2 THRU 6 = 5040.0± LOT 7 = 5133.6± LOT 8 = 5351.0± LOT 9 = 5396.7± LOT 10 = 5243.7± LOT 11 = 5279.7± LOT 12 THRU 16 = 5040.0± LOT 17 = 5011.6±</p> <p>BLOCK 4: LOT 1 = 5008.3± LOT 2 THRU 4 = 5008.5± LOT 5 = 5064.5± LOT 6 = 5889.1± LOT 7 THRU 13 = 5008.5± LOT 14 = 5019.6± TRACT A = 5862.2±</p> <p>BLOCK 5: LOT 1 = 5062.2± LOT 2 = 5026.2± LOT 3 THRU 21 = 5000.0± LOT 22 THRU 24 = 5500.0± LOT 25 = 6801.3±</p>	<p>BLOCK 6: LOT 1 = 5316.7± LOT 2 THRU 4 = 5000.3± LOT 5 = 5300.3± LOT 6 = 5617.5± LOT 7 = 5016.4± LOT 8 AND 9 = 5169.5± LOT 10 = 5141.6± LOT 11 = 5080.5± LOT 12 = 5043.4± LOT 13 = 5530.1± LOT 14 = 5403.9± LOT 15 = 5002.1± LOT 16 = 5006.3± LOT 17 THRU 20 = 5004.0± LOT 21 = 5454.0± LOT 22 = 5724.0± LOT 23 = 5773.0± LOT 24 = 5368.2± LOT 25 THRU 34 = 5004.0± LOT 35 = 5049.3±</p> <p>BLOCK 7: LOT 1 = 5502.6± LOT 2 = 5044.3± LOT 3 = 5053.9± LOT 4 AND 5 = 5040.0± LOT 6 = 5024.9± LOT 7 = 5021.2± LOT 8 = 5260.8± LOT 9 = 5146.4± LOT 10 = 5583.2± LOT 11 AND 12 = 5009.7± LOT 13 = 5008.1± LOT 14 = 5064.8± LOT 15 = 5023.4± LOT 16 = 5145.8± LOT 17 = 5386.2±</p> <p>BLOCK 8: LOT 1 = 5056.7± LOT 2 THRU 9 = 5008.5± LOT 10 = 5068.6± LOT 11 = 5860.0± LOT 12 = 5862.4± LOT 13 = 5386.5± LOT 14 THRU 18 = 5008.5± LOT 19 = 5007.0± LOT 20 = 5041.6±</p> <p>BLOCK 9: LOT 1 AND 16 = 5499.6± LOT 2 AND 15 = 5184.0± LOT 3 THRU 7 = 5004.0± LOT 8 AND 9 = 5044.2± LOT 10 THRU 14 = 5004.0±</p>	<p>BLOCK 10: LOT 1 = 5016.4± LOT 2 = 5004.9± LOT 3 THRU 5 = 5004.0± LOT 6 = 5081.7± LOT 7 = 5055.2± LOT 8 = 5005.2± LOT 9 = 5452.5± LOT 10 = 5014.4± LOT 11 = 5067.6± LOT 12 = 5005.5± LOT 13 = 5248.1± LOT 14 = 5130.9± LOT 15 = 5081.1±</p> <p>BLOCK 11: LOT 1 = 5214.2± LOT 2 THRU 18 = 5000.0± LOT 19 = 6000.0±</p> <p>BLOCK 12: LOT 1 AND 2 = 5044.2± LOT 3 THRU 11 = 5040.0± LOT 12 AND 13 = 5134.2± LOT 14 THRU 22 = 5040.0±</p> <p>BLOCK 13: LOT 1 = 5060.2± LOT 2 = 5060.4± LOT 3 = 5010.3± LOT 4 = 5031.0± LOT 5 = 5046.6± LOT 6 = 5017.4± LOT 7 = 5035.3± LOT 8 = 5024.2± LOT 9 = 5033.8± LOT 10 = 5077.0± LOT 11 = 5365.0± LOT 12 = 5276.9± LOT 13 = 5048.3± LOT 14 = 5052.1± LOT 15 = 5007.8± LOT 16 = 5003.3± LOT 17 = 5021.2± LOT 18 = 5063.2± LOT 19 = 5018.4± LOT 20 = 5014.1±</p> <p>BLOCK 14: LOT 1 = 5096.2± LOT 2 THRU 11 = 5008.5± LOT 12 = 5130.3± LOT 13 = 5238.2± LOT 14 THRU 18 = 5008.5± LOT 19 = 5036.6± LOT 20 = 5051.6± LOT 21 = 5077.2± LOT 22 = 5409.1± LOT 23 = 7390.9± TRACT B = 5755.5±</p>	<p>BLOCK 15: LOT 1 AND 2 = 5044.2± LOT 3 THRU 5 = 5040.0± LOT 6 AND 11 = 5310.0± LOT 7 THRU 9 = 5220.0± LOT 10 = 6947.9± LOT 12 THRU 14 = 5040.0±</p> <p>BLOCK 16: LOT 1 = 5014.2± LOT 2 = 5059.9± LOT 3 = 5272.2± LOT 4 = 5006.4± LOT 5 = 5013.6± LOT 6 = 5434.6± LOT 7 = 6374.2± LOT 8 = 6320.1± LOT 9 = 6904.1± LOT 10 = 8291.6± LOT 11 = 5958.1± LOT 12 = 5880.6± LOT 13 = 5874.5± LOT 14 = 8068.3± LOT 15 AND 16 = 6945.4± LOT 17 = 6406.0± LOT 18 = 5344.9± LOT 19 THRU 24 = 5000.0±</p>
--	--	---	--

PHASE #1 LEGAL DESCRIPTION:

THAT PORTION OF THE EAST HALF OF THE SOUTHEAST QUARTER AND THAT PORTION OF THE SOUTHEAST QUARTER OF THE NORTHEAST QUARTER OF SECTION 30, TOWNSHIP 17 NORTH, RANGE 23 EAST, W.M., KITTITAS COUNTY, WASHINGTON, LYING WEST PUBLIC UTILITY DISTRICT NUMBER TWO, OF GRANT COUNTY, PROJECT BOUNDARY, DESCRIBED AS FOLLOWS:

BEGINNING AT A PUBLIC UTILITY DISTRICT NUMBER TWO, OF GRANT COUNTY, BRASS CAP MONUMENT IN CONCRETE STAMPED "M-76W" MARKING SAID PROJECT BOUNDARY, SAID POINT BEARS SOUTH 04°55'06" WEST, 3986.17 FEET, FROM A PUBLIC UTILITY DISTRICT NUMBER TWO, OF GRANT COUNTY, BRASS CAP MONUMENT IN CONCRETE STAMPED "M-83W", ALSO MARKING SAID PROJECT BOUNDARY; THENCE SOUTH 89°05'20" WEST, FOLLOWING THE SOUTH BOUNDARY OF SAID SECTION, 971.28 FEET, TO A 5/8" REBAR WITH SURVEYOR'S CAP STAMPED "LS 12491" MARKING THE SOUTHWEST CORNER OF SAID EAST HALF OF THE SOUTHEAST QUARTER OF SAID SECTION, AS SHOWN ON RECORD SURVEY RECORDED IN BOOK 31 OF SURVEYS, AT PAGE 154, RECORDS OF KITTITAS COUNTY, WASHINGTON, SAID POINT BEARS NORTH 89°09'48" EAST, 1311.95 FEET, FROM A FOUND "DNR" BRASS CAP MONUMENT MARKING THE SOUTH QUARTER CORNER OF SAID SECTION; THENCE NORTH 00°01'54" WEST, FOLLOWING THE WEST BOUNDARY OF SAID EAST HALF OF THE SOUTHEAST QUARTER OF SAID SECTION, 2650.05 FEET, TO A 5/8 INCH REBAR WITH SURVEYOR'S CAP STAMPED "LS 12491" MAKING THE NORTHWEST CORNER OF THE EAST HALF OF THE SOUTHEAST QUARTER OF SAID SECTION; THENCE NORTH 00°02'00" WEST, FOLLOWING THE WEST BOUNDARY OF THE SOUTHEAST QUARTER OF THE NORTHEAST QUARTER OF SAID SECTION, 683.01 FEET, TO AN INTERSECTION WITH THE SOUTHEASTERLY RIGHT-OF-WAY BOUNDARY OF HUNTZINGER ROAD; THENCE NORTH 15°59'23" EAST, 128.14 FEET, TO A 5/8 INCH REBAR WITH SURVEYOR'S CAP STAMPED "LS 12491"; THENCE NORTH 89°22'46" EAST, 82.27 FEET, TO A 5/8 INCH REBAR WITH SURVEYOR'S CAP STAMPED "LS 12491"; THENCE SOUTH 00°14'52" EAST, 311.86 FEET, TO A 5/8 INCH REBAR WITH SURVEYOR'S CAP STAMPED "LS 12491"; THENCE NORTH 89°19'41" EAST, 746.89 FEET, TO A 5/8 INCH REBAR WITH SURVEYOR'S CAP STAMPED "LS 12491"; THENCE NORTH 14°03'05" EAST, 543.84 FEET, TO A 5/8 INCH REBAR WITH SURVEYOR'S CAP STAMPED "LS 12491"; THENCE NORTH 02°33'48" EAST, 302.10 FEET, TO AN INTERSECTION WITH THE NORTH BOUNDARY OF THE SOUTHEAST QUARTER OF THE NORTHEAST QUARTER OF SAID SECTION; THENCE NORTH 89°19'50" EAST, FOLLOWING SAID NORTH BOUNDARY, 303.49 FEET, TO AN INTERSECTION WITH THE PUBLIC UTILITY DISTRICT NUMBER TWO, OF GRANT COUNTY, PROJECT BOUNDARY AND BEING MARKED BY SAID BRASS CAP MONUMENT STAMPED "M-83W"; THENCE FOLLOWING SAID PUBLIC UTILITY DISTRICT NUMBER TWO, OF GRANT COUNTY, PROJECT BOUNDARY THROUGH THE FOLLOWING SEVEN (7) COURSES, SOUTH 36°17'13" WEST, 537.35 FEET, TO A 5/8 INCH REBAR; THENCE SOUTH 14°01'53" WEST, 923.23 FEET, TO A SIX INCH CONCRETE CYLINDER; THENCE SOUTH 14°02'26" WEST, 394.43 FEET, TO A 5/8 INCH REBAR; THENCE SOUTH 13°06'19" EAST, 510.37 FEET, TO A 5/8 INCH REBAR STAMPED "LS 10819"; THENCE SOUTH 13°12'17" WEST, 537.40 FEET, TO A 5/8 INCH REBAR; THENCE SOUTH 08°21'11" EAST, 638.29 FEET, TO A 5/8 INCH REBAR; THENCE SOUTH 19°03'24" EAST, 643.50 FEET, TO THE POINT OF BEGINNING.


CONTAINING 58.20 ACRES MORE OR LESS.

PHASE #2 LEGAL DESCRIPTION:

THAT PORTION OF THE SOUTHEAST QUARTER OF THE NORTHEAST QUARTER OF SECTION 30, TOWNSHIP 17 NORTH, RANGE 23 EAST, W.M., KITTITAS COUNTY, WASHINGTON, LYING WEST PUBLIC UTILITY DISTRICT NUMBER TWO, OF GRANT COUNTY, PROJECT BOUNDARY, DESCRIBED AS FOLLOWS:

BEGINNING AT A PUBLIC UTILITY DISTRICT NUMBER TWO, OF GRANT COUNTY, BRASS CAP MONUMENT IN CONCRETE STAMPED "M-76W" MARKING SAID PROJECT BOUNDARY, SAID POINT BEARS SOUTH 04°55'06" WEST, 3986.17 FEET, FROM A PUBLIC UTILITY DISTRICT NUMBER TWO, OF GRANT COUNTY, BRASS CAP MONUMENT IN CONCRETE STAMPED "M-83W", ALSO MARKING SAID PROJECT BOUNDARY; THENCE SOUTH 89°05'20" WEST, FOLLOWING THE SOUTH BOUNDARY OF SAID SECTION, 971.28 FEET, TO A 5/8" REBAR WITH SURVEYOR'S CAP STAMPED "LS 12491" MARKING THE SOUTHWEST CORNER OF SAID EAST HALF OF THE SOUTHEAST QUARTER OF SAID SECTION, AS SHOWN ON RECORD SURVEY RECORDED IN BOOK 31 OF SURVEYS, AT PAGE 154, RECORDS OF KITTITAS COUNTY, WASHINGTON, SAID POINT BEARS NORTH 89°09'48" EAST, 1311.95 FEET, FROM A FOUND "DNR" BRASS CAP MONUMENT MARKING THE SOUTH QUARTER CORNER OF SAID SECTION; THENCE NORTH 00°01'54" WEST, FOLLOWING THE WEST BOUNDARY OF SAID EAST HALF OF THE SOUTHEAST QUARTER OF SAID SECTION, 2650.05 FEET, TO A 5/8 INCH REBAR WITH SURVEYOR'S CAP STAMPED "LS 12491" MAKING THE NORTHWEST CORNER OF THE EAST HALF OF THE SOUTHEAST QUARTER OF SAID SECTION; THENCE NORTH 00°02'00" WEST, FOLLOWING THE WEST BOUNDARY OF THE SOUTHEAST QUARTER OF THE NORTHEAST QUARTER OF SAID SECTION, 683.01 FEET, TO AN INTERSECTION WITH THE SOUTHEASTERLY RIGHT-OF-WAY BOUNDARY OF HUNTZINGER ROAD AND THE TRUE POINT OF BEGINNING; THENCE NORTH 15°59'23" EAST, 128.14 FEET, TO A 5/8 INCH REBAR WITH SURVEYOR'S CAP STAMPED "LS 12491"; THENCE NORTH 89°22'46" EAST, 82.27 FEET, TO A 5/8 INCH REBAR WITH SURVEYOR'S CAP STAMPED "LS 12491"; THENCE SOUTH 00°14'52" EAST, 311.86 FEET, TO A 5/8 INCH REBAR WITH SURVEYOR'S CAP STAMPED "LS 12491"; THENCE NORTH 89°19'41" EAST, 746.89 FEET, TO A 5/8 INCH REBAR WITH SURVEYOR'S CAP STAMPED "LS 12491"; THENCE NORTH 14°03'05" EAST, 543.84 FEET, TO A 5/8 INCH REBAR WITH SURVEYOR'S CAP STAMPED "LS 12491"; THENCE NORTH 02°33'48" EAST, 302.10 FEET, TO AN INTERSECTION WITH THE NORTH BOUNDARY OF THE SOUTHEAST QUARTER OF THE NORTHEAST QUARTER OF SAID SECTION; THENCE SOUTH 89°19'50" WEST, FOLLOWING SAID NORTH BOUNDARY, 1011.74 FEET, TO THE NORTHWEST CORNER OF THE SOUTHEAST QUARTER OF THE NORTHEAST QUARTER OF SAID SECTION, SAID POINT BEING MARKED BY A 5/8 INCH REBAR WITH SURVEYOR'S CAP STAMPED "LS 12491"; THENCE SOUTH 00°02'00" EAST, FOLLOWING THE WEST BOUNDARY OF SAID SOUTHEAST QUARTER OF THE NORTHEAST QUARTER, 638.52 FEET, TO THE TRUE POINT OF BEGINNING.

CONTAINING 17.41 ACRES MORE OR LESS.



Todd Lolkus

Land Surveying, LLC.

Hassle free land development from start to finish.
1322 Basin St. SW, Suite "A", Ephrata, WA 98823
(509) 754-0135 www.todd-surveying.com Fax: (509) 754-0137

PROJECT NAME : VANTAGE BAY PLANNED UNIT DEVELOPMENT				
DRAWN BY:	PROJECT # :	DATE:	SCALE:	SHEET:
ROGER CHAMBERLAIN	06-104-PL	06-05-06	N/A	5 OF 6

